



**Meanwhile in Canada...**

# Causes

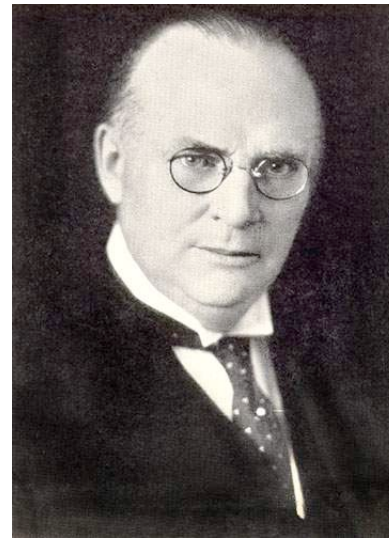
- Wheat prices decline from '27
- Drought hurts Western farmers → Collapse of **Winnipeg Grain Exchange** before Black Tuesday
- US collapse led to decrease in demand for raw materials; protective tariffs hurt exports
- CAN lost \$300M on BT; US lost \$9B
  - 27% unemployment
  - Farmers declare bankruptcy
  - Wealth gap: some benefitted from deflation
  - AB and BC passed sterilization laws





# Politics

- Liberal PM **Mackenzie King** vs. Conservative **R.B. Bennett** (laissez-faire, protective tariffs) → Bennett wins 1930 election
  - \$20M in relief; Asked UK for \$\$ → refused
  - Relief Camps (CAN Hoovervilles)
- Bennett's tariff only helps central manufacturers
  - No help to farmers/Maritimes
  - Seen as kind of a jerk



# Resistance

- **Relief Camp Workers Union** stages walkout
  - Communist leader “Shim” Evans goes to Ottawa
  - Bennett stops trains to negotiate → refuses
  - Strikers to Regina → RCMP engaged peaceful rally → riot
  - Bennett’s career takes a hit





# Yes We CAN!

- **Canadian New Deal**

- Began provincially, then made its way to Bennett
- Minimum wage; 8hr. workday; 6-day max workweek
- Health insurance, workmen's comp, unemployment ins.

*MBennett*

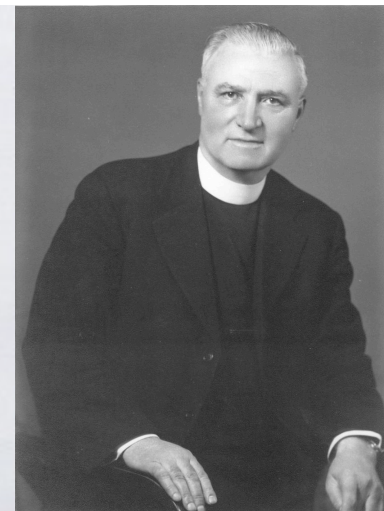


# The Return of the King

- 3<sup>rd</sup> Party sinks Bennett → reelection of King
- Lots of labour unrest → socialism/communism flare
  - WUL communist league denounced by Internationale
  - 1935 – Illegal to form revolutionary orgs.
- **Antigonish Movement**
  - Maritime priests led by *Rev. Dr. Moses Coady*
  - Failed b/c of discord b/t Catholics/Protestants



Bring back  
WLM King!



- **Cooperative Commonwealth Federation (Winnipeg)**
  - *J.S. Woodsworth* – wanted progressive/labour politics
  - Public ownership of transportation, finance, electricity “for the good of the people”
- **Social Credit Movement – “Bible Bill” Aberhart**
  - Alberta-based price fixing to avoid inflation
  - Worked there, declared illegal by courts/govt.
- **Union Nationale – Quebec**
  - Attacked Liberal leadership
  - Supported semi-Fascist “Padlock Law” of 1937
  - Ruled Quebec until 1960

